



7 Bedroom House

£11M

Queensberry Place,
London SW7



BTH
PROPERTIES.



info@bthproperties.co.uk
+44 (0)20 3865 1239
bthproperties.co.uk

Specifications

This magnificent stucco-fronted house situated in the heart of South Kensington offers seven bedrooms arranged over six floors. The house has been beautifully restored to a very high standard and benefits from having generous entertaining space, two decked terraces and integrated air-conditioning.

The house is also within a stones throw away of the French Lycee, Natural History Museum, Victoria & Albert Museum and the many cafes, restaurants and bars in and around the area.

The house is conveniently located two minutes walk from South Kensington underground station and is also well served with many bus routes. An additional advantage is its proximity to the A4/M4 with easy access to Heathrow.

- 7 Bedrooms
- 2 Bathrooms
- 4 Shower Rooms
- 2 Reception Rooms
- Kitchen
- Roof Terrace

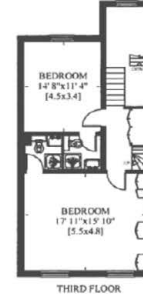
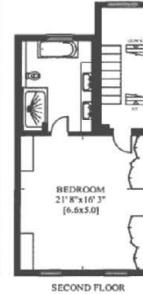
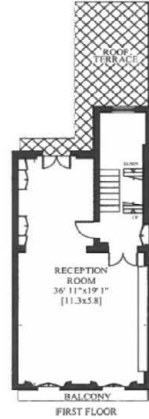


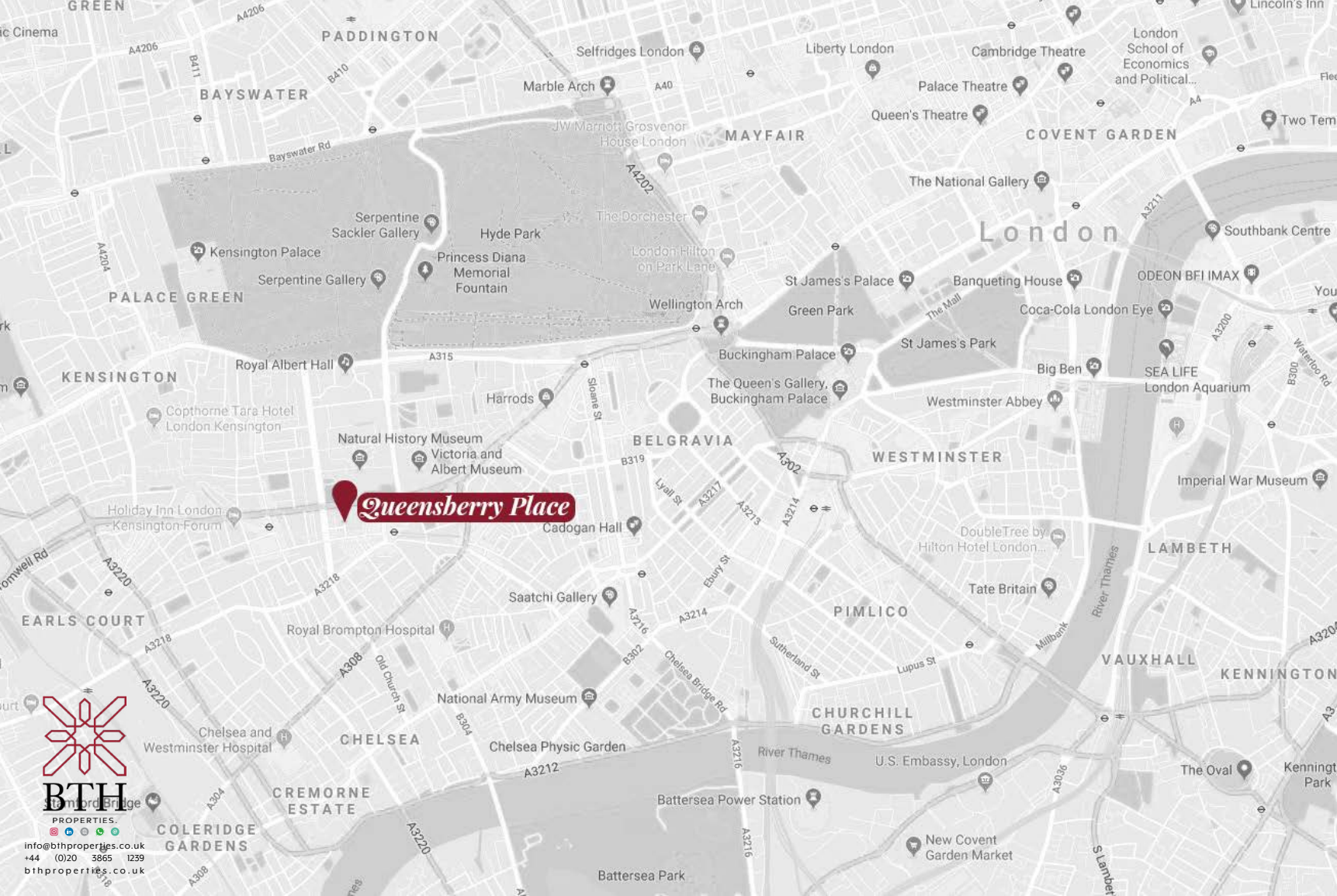
Floor Plans

5,298 Sq. Ft

22 QUEENSBERRY PLACE
LONDON SW7

Gross Internal Area: 492 Sq. metres
Including External Vaults: 5298 Sq.Ft
and Under 1.5m





Queensberry Place



info@bthproperties.co.uk
+44 (0)20 3855 1239
bthproperties.co.uk