



Newly Launched - Bulk Sale Of Full Development Only

De Burgh Manor Leasehold

Luxury Lifestyle Resort In Ireland - 17 Luxury Suites

£1.6M (60% Discount on the Full Market Price)

South Kildare,
Ireland



BTH

PROPERTIES

info@bthproperties.co.uk
+44 (0)20 3865 1259
bthproperties.co.uk

Specifications

De Burgh Manor, just two miles from Athy on the Monasterevin side of the town, is the largest mansion in South Kildare. It was built between 1720 and 1730 for Captain William Burgh who was the Comptroller and Accountant General for Ireland.

The Architect was his brother Thomas Burgh who also designed Trinity College Library, Dr. Steeven's Hospital and Collins Barracks Dublin. The original building comprised a central block of seven bays, three stories high over a basement. The overlapping side wings were added early in the 19th century.

Using its own development company and experienced team of consultants and tradesmen, internal remodeling and refurbishment will take place to convert the existing suites in stylish elegance, with every thought considered.

The fully-furnished studios will be complemented by vibrant interior design schemes, with premium quality furnishing, fabrics, prints and accessories creating truly unique living spaces designed for later life.

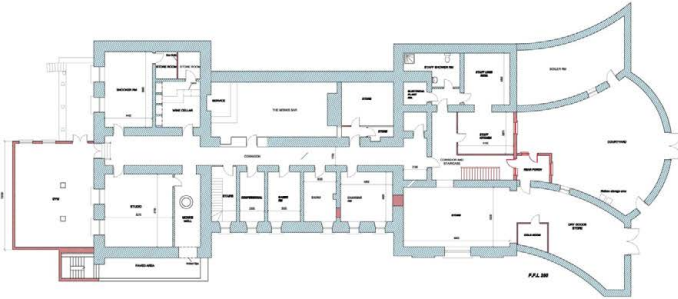
The new resort will boast a number of elegant communal areas for fine dining, relaxation and socialising, with an inviting cellar bar complete with open fireplace and set within beautiful grounds and manicured gardens.



Floor Plans

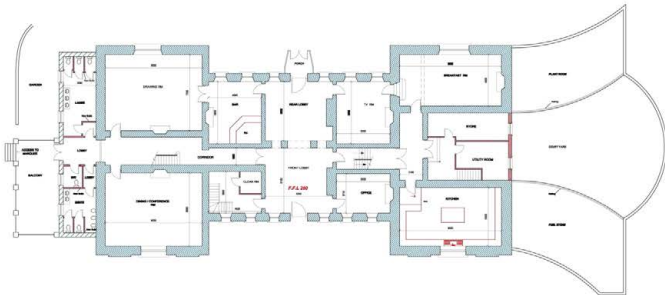
BASEMENT

Internal floor area = 784 sqm



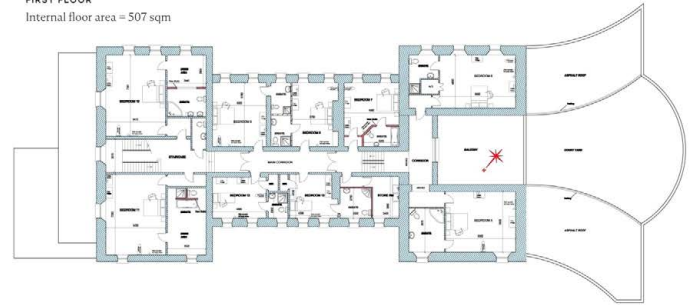
GROUND FLOOR

Internal floor area = 620 sqm



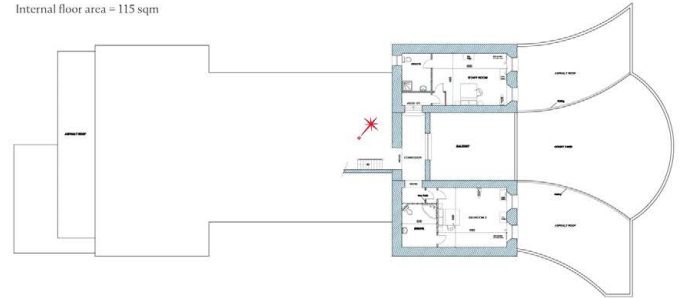
FIRST FLOOR

Internal floor area = 507 sqm



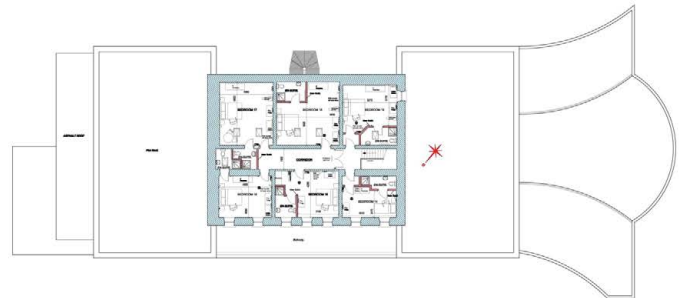
MID FLOOR

Internal floor area = 115 sqm



SECOND FLOOR

Internal floor area = 204 sqm





BTH

PROPERTIES
info@bthproperties.co.uk
+44 (0)20 5865 1239
bthproperties.co.uk