

Brand New Lease for a Brand New Commercial

D1 Commercial Space to Rent in Vauxhall

£111,800 per annum

(Reduced from £170k)

Vauxhall
London



Video



info@bthproperties.co.uk
+44 (0)20 3865 1239
bthproperties.co.uk



Specifications

Commercial Unit:

D1 Licence

Ground floor and basement

Terms can be flexible - terms and conditions apply

It is ready to move in as Shell and Core

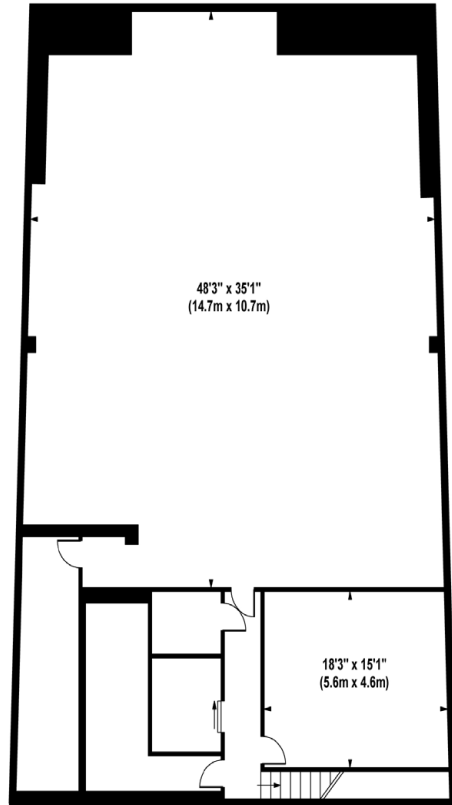
Gross Internal Area: 4300 sq. ft. / 399.5 sq. m.



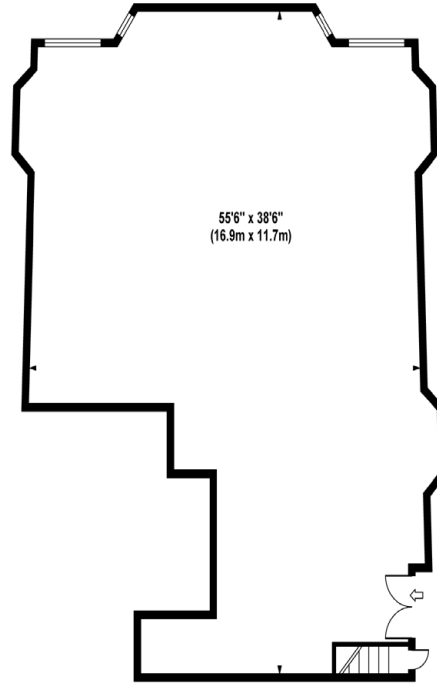


VAUXHALL BRIDGE ROAD

Approximate Gross Internal Area 4300 sq ft / 399.5 sq m



LOWER GROUND FLOOR
GROSS INTERNAL
FLOOR AREA 2566 SQ FT



GROUND FLOOR
GROSS INTERNAL
FLOOR AREA 1734 SQ FT

Although every attempt has been made to ensure accuracy, all measurements are approximate.
The floor plan's for illustrative purposes only and not to scale. Measured in accordance to RICS standards.